



# POPLAR POINTE

## TOWNHOMES



16 MODERN TOWNHOMES OF DISTINCTIVE DESIGN  
CLOSE TO LYNNWOOD LIGHT RAIL

19930 POPLAR WAY • LYNNWOOD, WASHINGTON  
STYLISH IN-CITY LOCATION ONLY MINUTES TO SEATTLE & BELLEVUE



Introducing 16 Beautiful New Northwest Contemporary-style Townhomes in An Ideal Northend Location Close to the New Lynnwood Light Rail Station, and Filled with Quality Finishes and Modern Amenities Throughout



WELCOME HOME!  
[www.PoplarPointeTownhomes.com](http://www.PoplarPointeTownhomes.com)

# MADRONA FLOOR PLAN



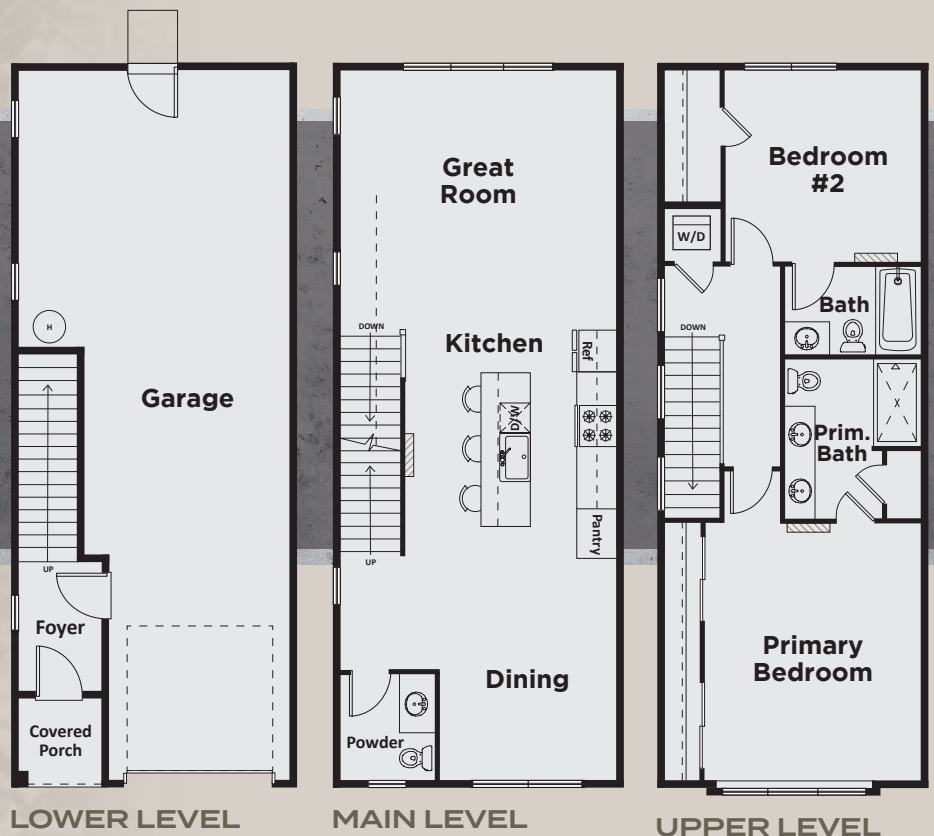
## TOWNHOMES A1-A5 & B1-B5

- Three Bedrooms, 3.5 Baths
- 1,874 and 1,906 SF Options
- Great Room Floor Plan
- Chef's Kitchen with Pantry
- Primary Suite with Walk-in Closet
- Main Level Deck
- 212 SF Garage

# WISTERIA FLOOR PLAN

## TOWNHOMES C1-C6

- Two Bedrooms, 2.5 Baths
- 1,385 and 1,389 SF Options
- Great Room Floor Plan
- Chef's Kitchen with Pantry
- Primary Suite with Large Closet
- Covered Porch
- 2+ Car Garage, 516 SF





# POPLAR POINTE

## TOWNHOMES

16 MODERN TOWNHOMES  
OF DISTINCTIVE DESIGN

Introducing Poplar Pointe Townhomes, a beautiful new community conveniently located in East Lynnwood near the new Lynnwood Light Rail Station and numerous dining, shopping, and entertainment options

19930 POPLAR WAY  
LYNNWOOD,  
WASHINGTON



### CLOSE TO LYNNWOOD LIGHT RAIL

Adjacent to I-5 and 405, making it an ideal location for commuters to Seattle, Everett and the Eastside. Discover a higher standard of living with the quality designs and thoughtful detailing you'll find in every Poplar Pointe Townhome. Stunning Northwest Contemporary architecture, unique open floor plans, and first class details grace every home.

### YOU'LL NEVER WANT TO LEAVE!

The high quality construction and craftsmanship in the Poplar Pointe Townhomes community means years of pride in ownership and worry-free living. Come by and visit the beautiful model home and discover what Northwest Contemporary living is all about. Quality materials and natural finishes surround you in comfort while the beautiful cabinetry, designer tile, quartz countertops throughout, stainless steel appliances, and much more set your home apart from the crowd.

### EXTERIOR DETAILS

Poplar Pointe is professionally landscaped, including the common areas. Exterior home details include ample exterior lighting on the walkways, and covered entries. Our timeless Northwest Contemporary architectural design will keep your townhome in style for years to come.

### ENERGY STAR DETAILS

All homes are compliant with 2024 Washington State Energy codes, featuring R-49 insulation R values, double pane vinyl windows, energy-efficient lighting and appliances including A/C mini-splits on every floor. All of these features will help ensure low utility bills.

[www.PoplarPointeTownhomes.com](http://www.PoplarPointeTownhomes.com)

FOR MORE INFORMATION CONTACT

**Bruce Lystad:** Listing Broker

425-750-7006 • [brucelystad@gmail.com](mailto:brucelystad@gmail.com)

**John L. Scott**  
REAL ESTATE

**HomesNW**  
Guiding You Home Since 1988