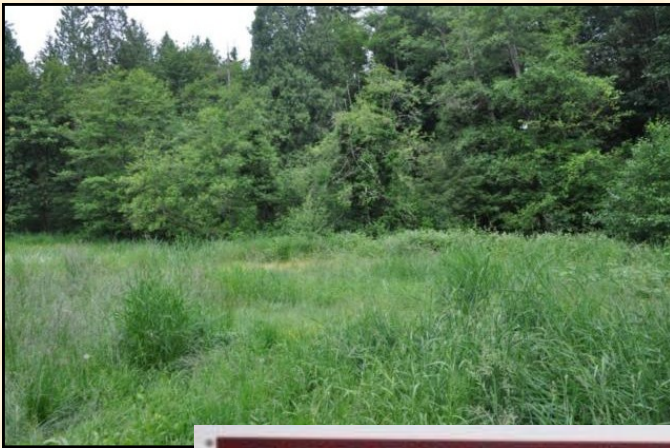


Rare 4.62 acres, Buildable, 228th & 39th SE

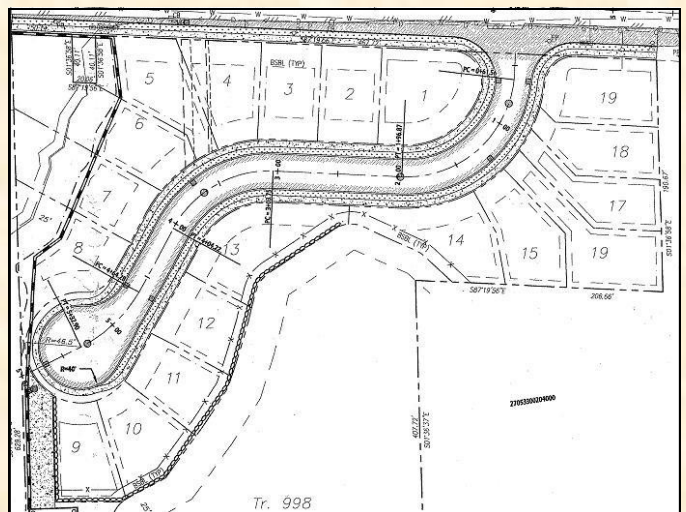
3902 228th St SE, Bothell 98021 — MLS# 86860 — Tax ID : 27053300200200

Canyon Park 4.62 developable acres. Property on the south side of 228th and 39th a prime new construction area. Prelim plat approval obtained in 2008 for 19 lots. 12 lots are on the subject property. Build your Estate Home / finish plat. New homes in area \$450 - \$700. This is a rare find, these properties are usually never listed. Perfect for investor or developer. Finished lot prices up to \$200 in the area. Don't wait, Seller will look at all offers. House on property provides rental income. Barn on property. Phone and cable TV available, sewer and gas are in the street and Outbuilding and Territorial View. Northshore Schools.

Prelim plat approval obtained in 2008 for 19 lots!



PROPOSED LAND USE ACTION



Listing Agent: Bruce Lystad—425-750-7006
Windermere Real Estate/Mill Creek, Inc.